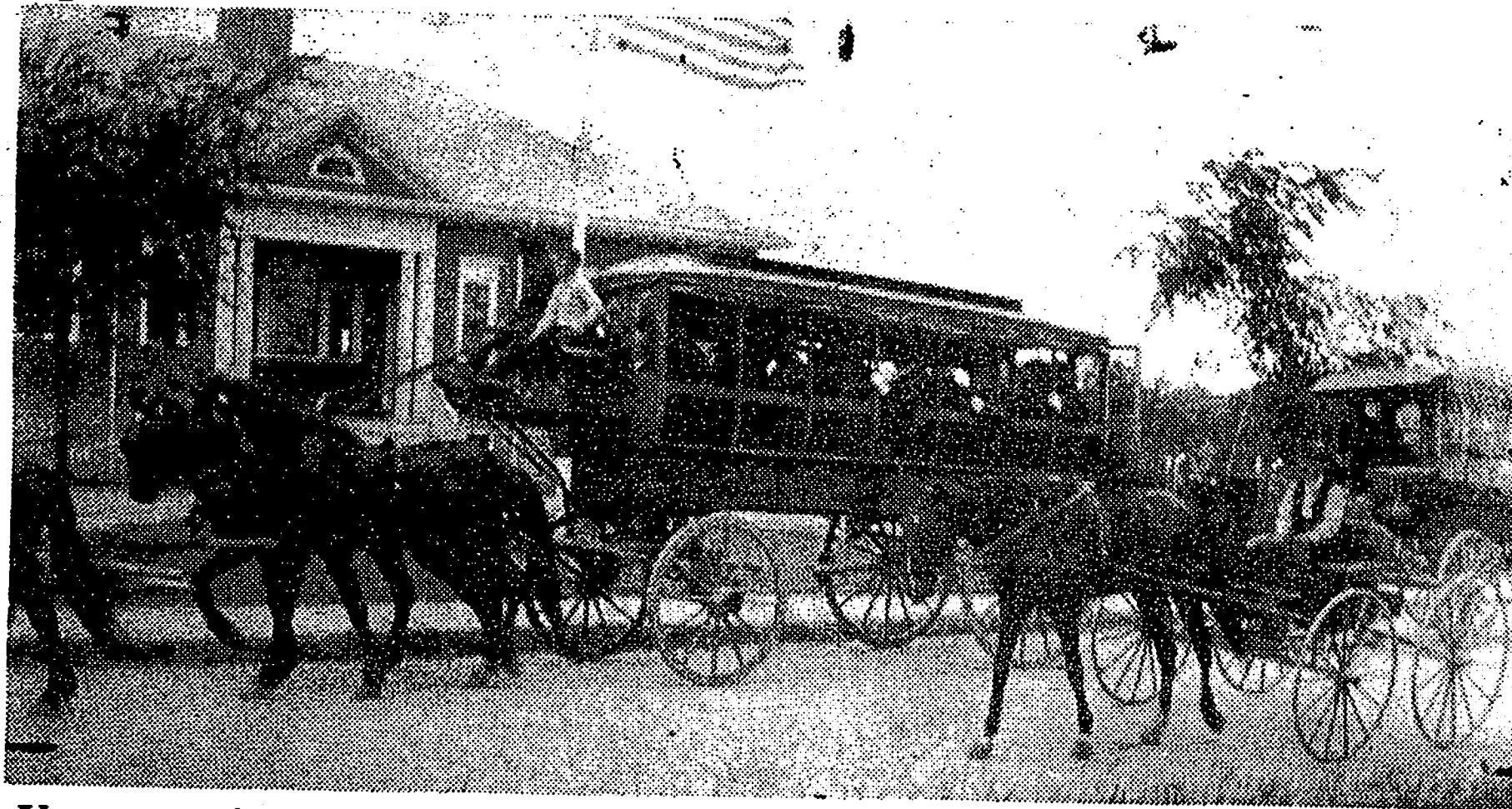


File #



Upon arriving in Duxbury, a horse-drawn "barge" with "Martha Washington" lettered along its side, met the train. Wooden steps in back led to the interior of this vehicle, which had long seats facing each other. It came from Briggs' livery stable owned by Eben Briggs' father, and it was often driven by Eben. (*The Duxbury Railroad Station was on South Station St. across the street from the present location of the Duxbury Clipper.*)